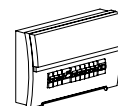


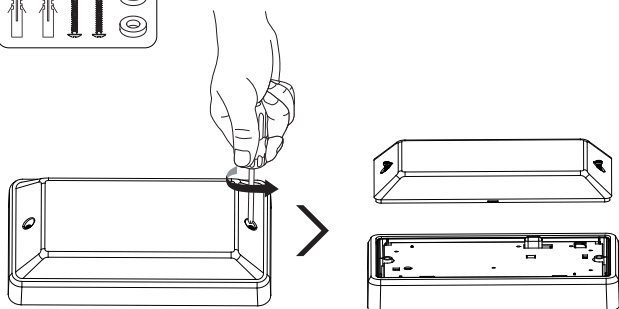
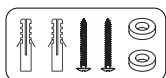
# Porto

## WARNING ⚡

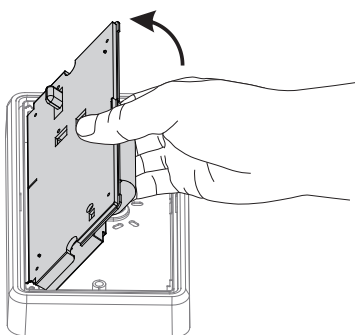
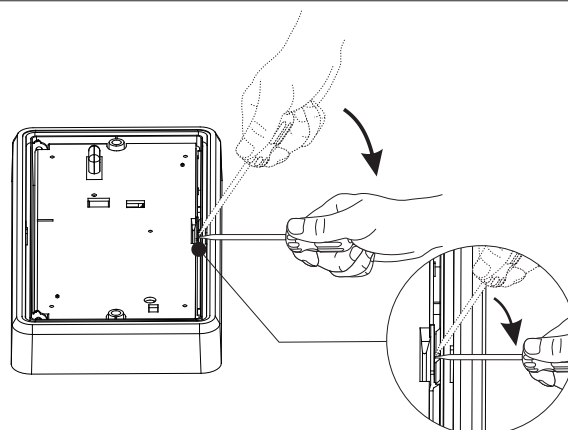
1. Switch off before installation / maintenance.
2. Switch on only after complete installation and examination of the circuit.
3. Professional electrician for installation and maintenance only.



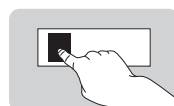
Turn Off power supply before starting any installation. Read instructions & check you have all the tools & accessories to complete the installation correctly.



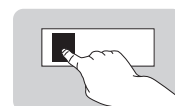
1 2



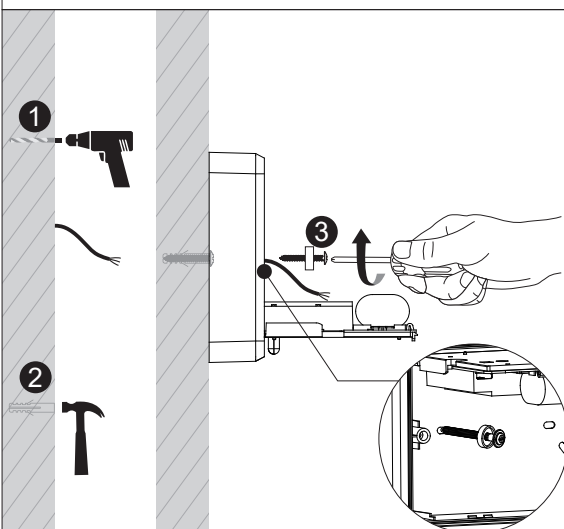
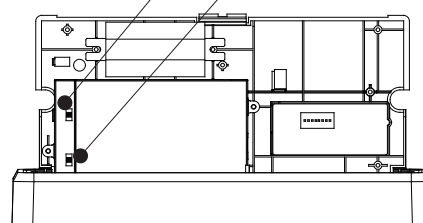
3 4



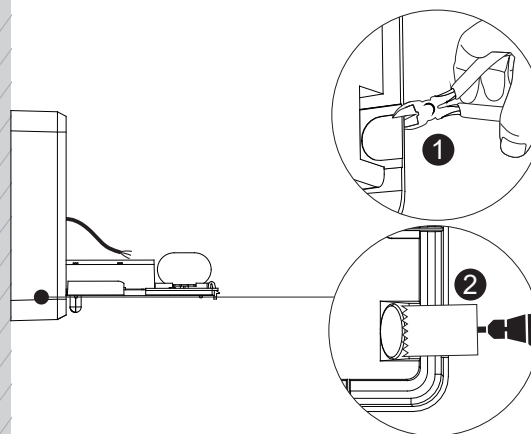
Select preferred colour temperature for product in CCT change function only

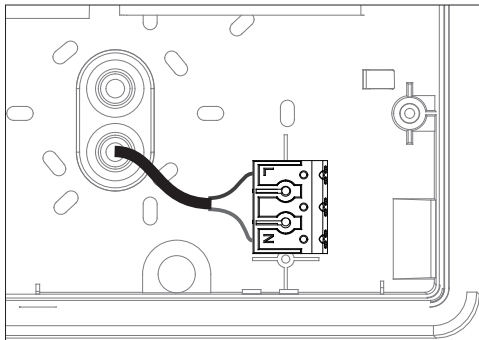


Select preferred power



5-1 5-2

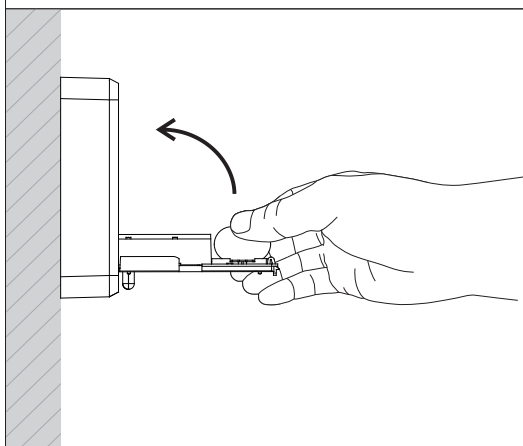
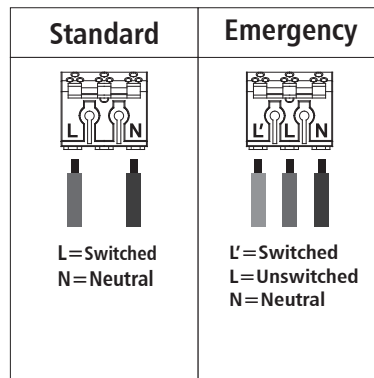




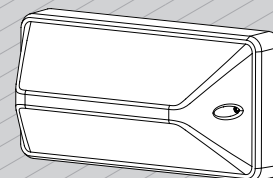
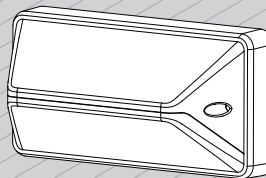
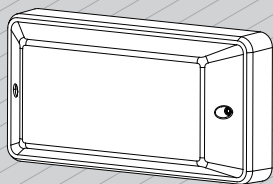
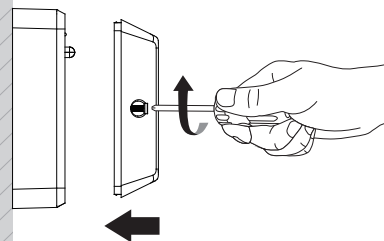
L Switched  
N Neutral

Wire diameter: 0.5-2.5mm<sup>2</sup>  
Wire stripping length: 8-10mm

6 7



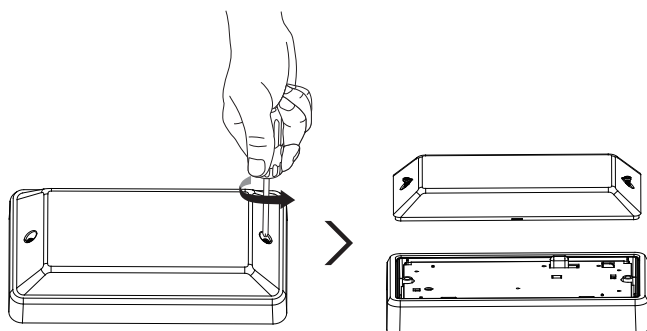
8 9



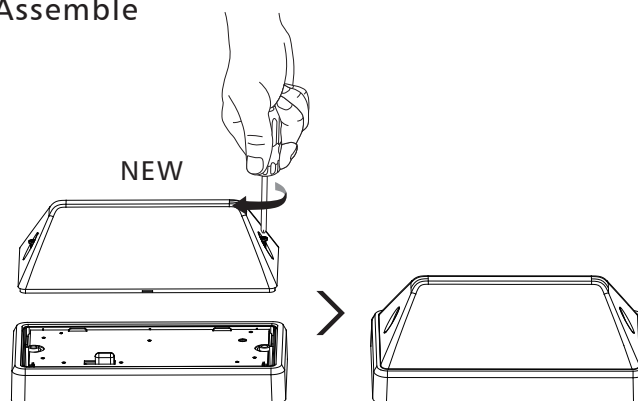
COMPLETE

10

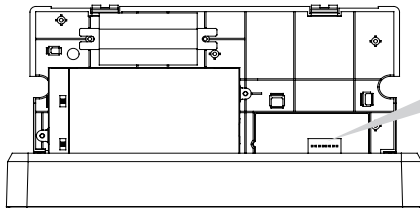
## Disassemble



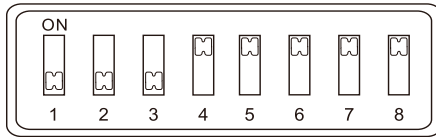
## Assemble



## SENSOR



Daylight Sensor				Hold Time			Detection Area		
1	2	3		4	5	6	7	8	
ON	ON	ON	2Lux	ON	ON	5S	ON	ON	100%
ON	ON	-	10Lux	-	ON	30S	-	ON	75%
-	ON	-	30Lux	ON	-	90S	ON	-	50%
ON	-	-	50Lux	-	-	5min	-	-	25%
-	-	-	Disable	ON	ON	20min	-	-	30min
					-	30min			



Factory settings		
Daylight Sensor	Hold Time	Detection Area
Disable	5S	100%

Daylight Sensor				
	1	2	3	
I	ON	ON	ON	2Lux
II	-	ON	ON	10Lux
III	-	ON	-	30Lux
IV	-	-	ON	50Lux
V	-	-	-	Disable

Hold Time				
	4	5	6	
I	ON	ON	ON	5S
II	ON	ON	-	30S
III	ON	-	ON	90S
IV	ON	-	-	5min
V	-	ON	ON	20min
VI	-	-	-	30min

Detection Area			
	7	8	
I	ON	ON	100%
II	ON	-	75%
III	-	ON	50%
IV	-	-	25%

### Daylight sensor:

The sensor can be set to only allow the lamp to illuminate below a defined ambient brightness threshold.

When set to Disable mode, the daylight sensor will switch on the lamp when motion is detected regardless of ambient light level.

**Notice 1:** The light threshold can be selected through the slide switch, it may cause a large deviation in different lamps.

### Hold time:

Refers to the time period the lamp remains at 100% illumination after no motion detected.

**Notice 1:** The hold time can be selected by the slide switch. The hold time counting should be started after the sensor is powered on and initialized.

### Detection area:

**Sensor test condition:** The test is based on 3m height, the detect distance radius is based on ground, the detect distance can be adjusted through the slide switch.

**Sensor test environment and reference:** The detect range is measured by human body whose stature is around 1.6-1.7M with medium size and traveling speed is around 1.0-1.5M per second. If the stature, bodily form and traveling speed are changed, then the detect range will be changed accordingly.

**Sensor lamp's reaction under open/narrow environment:** Test result will be highly influenced by test environment, the more open environment, the closer detect distance; the narrower environment, the longer detect distance. The detector may do self-excitation in a narrow environment.

**Sensor Setting based on environmental disturbance:** Some environmental disturbances will cause abnormal induction, such as the lamp can not automatically turn off for a long time or the sensor function is invalid, then users can adjust sensor distance to reach the ideal effect. It is recommended to adjust the sensing distance to 50% for the environment where near the heavy equipment, metal sheets and metal pipes, concrete wall (<30cm thickness) etc. Recommend to keep 100% sensor distance in open environment. For environment where near the routers, telecommunications base stations, electrical machinery etc, it is recommended to keep the installation distance of more than 5 meters and adjust to 50% sensor distance.

## Emergency

Input power	3W
Discharge power	2W
Rated Input Voltage(V)	220-240V
Frequency	50/60Hz
Input Voltage	198-264V
Battery	6.4V 1500mAh (LifepO4)
Lifetime	Over 2000 cycles
Battery duration	≥3hrs
Charge Period	≤24hrs
Emergency switching time	≤1S
Emergency Operating Temp. (°C )	0°C-25°C

### Instructions for automatic test option

1.Once the unit is powered up it will automatically initiate a self test and diagnostics as follows:

- Every 4 seconds:Checks for battery disconnection,charger board fault,lamp failure and transformer failure.
- Every month:Performs a 3 minutes duration test.
- Every yeat:Performs a 1 Hour or 3 Hours duration test.

All test functions are factory preset and do not need field adjustment.

#### 2.Dual Colour Indicator LED Status Mesnings

- Green Solid On Ready/Normal Operation
- Red Requires Services

•	One flash, 4 seconds pause	Battery not connected
••	Two flashes, 4 seconds pause	Battery short or low battery voltage
•••	Three flashes, 4 seconds pause	Charger board fault
••••	Four flashes, 4 seconds pause	Transformer fault
•••••	Five flashes, 4 seconds pause	LED lamp fault

NOTE:After repairing a service fault,press and hold the test button for 2 seconds to reset the flashing indicator light to green.

#### 3.Manual Testing

Press test button once	30 seconds duration test
Press test button twice within 2 seconds	3 minutes duration test
Press test button 3 times within 2 seconds	30 minutes duration test
Press test button 4 times within 2 seconds	1 or 3 hours duration test

Note: DALI & 1-10V driver specification, please refer to individual driver datasheet.